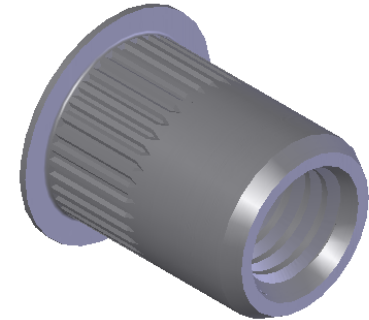


3/8-16 UNC 2B
PER ASME B1.1
MINOR DIA.: .307 - .321



SECTION A-A


NOTE:

- GRIP RANGE: .027-.150
- HOLE SIZE: .531 +.006/-.000 AFTER ALL APPLIED FINISHES.
- INSTALLED LENGTH: .470 MAX.
- LUBRICATION: NONE
- INSTALLATION TOOL: MS 50 SPIN PULL

REVISIONS			
REV.	DESCRIPTION	DATE	ECN
A	NEW RELEASE	11/10/2006	N/A
B	UPDATE DIMENSION AND NOTES	10/9/09	1225

PROPRIETARY AND CONFIDENTIAL
THIS DRAWING, AND THE INFORMATION CONTAINED HEREIN, ARE THE PROPERTY OF SHEREX AND ARE NOT TO BE USED IN ANY MANNER DETRIMENTAL TO THE INTEREST OF THE COMPANY.
SHEREX SOLUTIONS RESERVES THE RIGHT TO REVISE PART/DRAWING WITHOUT NOTICE.

		UNLESS OTHERWISE SPECIFIED:	NAME	DATE
		DIMENSIONS ARE IN INCHES TOLERANCES: ANGULAR: MACH ± 1 BEND ± 1 TWO PLACE DECIMAL ± .01 THREE PLACE DECIMAL ± .002	DRAWN	TOO 11/10/06
		INTERPRET GEOMETRIC TOLERANCING PER: ASME Y14.5M-1994	CHECKED	
		MATERIAL	ENG APPR.	TOO 11/10/06
		302 STAINLESS	MFG APPR.	AJP 11/10/06
		FINISH	Q.A.	
		PASSIVATE	COMMENTS:	
NEXT ASSY	USED ON		E-mail: info@sherex.com	
			www.sherex.com	
			Phone: 866-474-3739	
			Fax: 716-875-0358	
	APPLICATION	DO NOT SCALE DRAWING		



TITLE:
LARGE FLANGE OPEN END

SIZE DWG. NO.	REV
A CAL1-3716-150	B

SCALE: 2:1 WEIGHT: .009 kg SHEET 1 OF 1